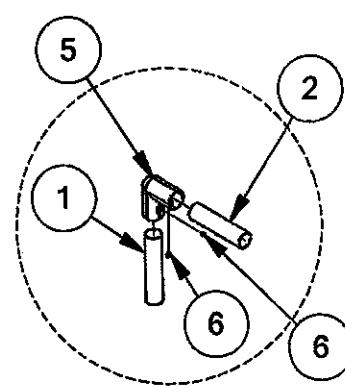




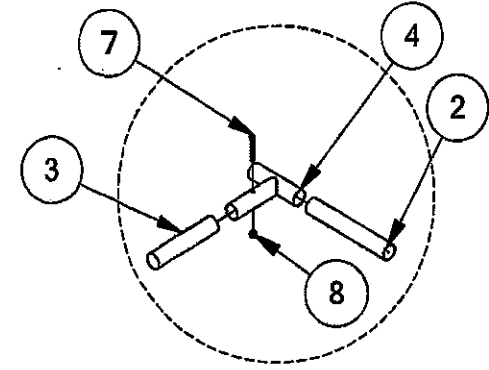
# 24' JUNIOR SOCCER GOAL (PAIR)

561-505-24

ITEM NO.	PART NUMBER	DESCRIPTION	QTY.
1	563-606	2-3/8" X 10'	4
2	563-222-24	2-3/8" X 24' Cross Bar	2
3	563-403	2-3/8" x 10' Net Support	4
4	125-523	2-3/8" T-Clamps	8
5	503-501	2-7/8" Elbow	4
6	196-802	1/2" x 1/2" Socket Set Screw	8
7	116-614	3/8" x 3-1/2" Hex Head Bolt	4
8	226-601	3/8" Lock Nut	4
9	373-303	1/8 Yellow PP Cord	300ft
10	416-400	1/4" Socket Key	1



DETAIL A

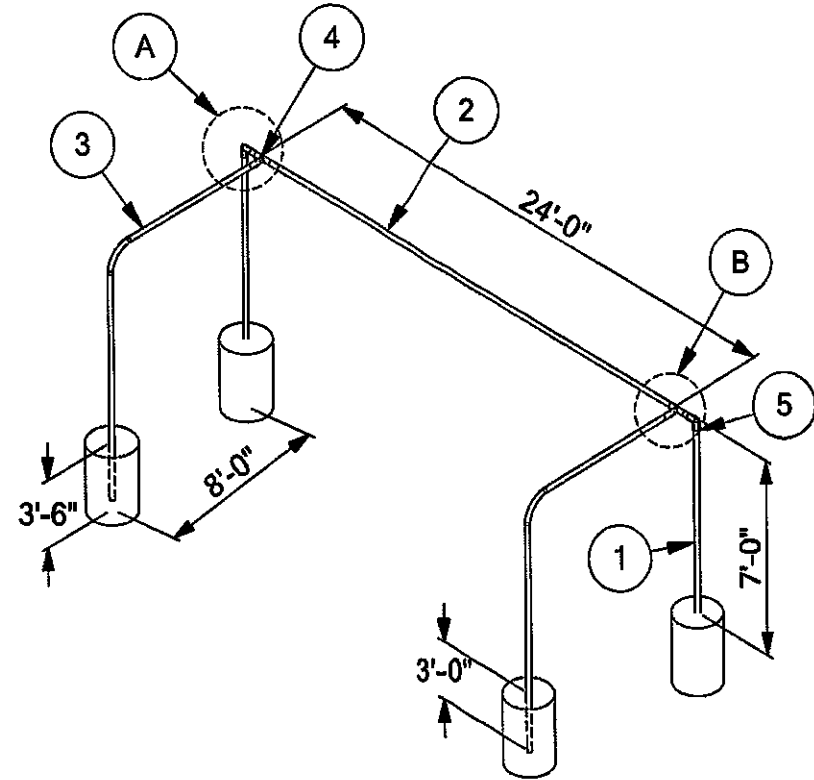


DETAIL B

### \*IMPORTANT\*

Please retain this instruction sheet in your files. It contains important replacement parts information. All equipment should be installed in accordance with these instructions.

It is important to use and maintain all public playground equipment properly. Playground equipment, which is improperly maintained, can cause serious injury. Periodical inspections, maintenance, repair and/or replacement of damaged parts is necessary for safe operation of equipment and safety of users. Resilient Surfacing should be used under all playground equipment. Appropriate publications, available at no charge, from The Consumer Product Safety Commission, include "A Handbook for Public Playground Safety". You can receive your free copy by calling 1-301-504-7908





## 24' JUNIOR SOCCER GOAL (PAIR)

561-505-24

**NOTE:** All threaded ends of bolts protruding beyond nuts must be cut off and/or peened to eliminate sharp edges. No more than two threads should extend beyond face of the nut. All washers, "T" nuts, and other fastener hardware used on round pipe or tubing must be hammered down to conform to the curved underlying surface to eliminate catch points.

**DO NOT** tighten nuts more than hand-tight until entire assembly is completed.

### INSTRUCTION:

1. Assemble goals on the ground before digging footing holes.
2. Attach uprights to tip rail with elbows. Tighten in place with set screws.
3. Attach Net Support/Backstays with T-Clamps. Do not tighten T-Clamps.
4. Stand goals upright. Tighten T-Clamps. Set in place. Mark footing hole positions. Move aside and dig footing holes.
5. Position goal in footing holes. Use ships, braces, etc. to level and hold in place. Pour concrete. Crown footings 2-3" below playing surface. Let set 24-48 hours before use.
6. Attach net. Full size regulation net doubled over can be tied to posts using string or plastic ties.

### MAINTENANCE:

Touch up any marred paint surfaces. Periodically check for loose bolts, broken parts, and replace immediately.